



Boy's School Uniform 2021/22

All pupils at The Cardinal Wiseman School from Year 7 to Year 11 are expected to wear school uniform. All items of uniform are compulsory and must be purchased through the official school uniform suppliers.

Please make sure that all your clothing is clearly marked with your name.

Please be aware that if you do not wear the correct school uniform **you may be placed in isolation until the situation has been resolved.**

No jewellery may be worn, except for medical bracelets or watches. No badges to be worn other than a small religious type. Nose studs and earrings are unacceptable.

Coats must be of a length that covers the Blazer. They must be completely plain black or navy and without stripes or motifs. If the coat has a fur trim, it must be the same colour as the coat. The material should be plain cotton/woollen or a similar looking synthetic material. Denim, leather, suede, fur and leather look "PVC" are unacceptable materials. In addition, tracksuits and tracksuit hooded tops are not acceptable for use as coats.

Boys' Uniform

- Royal blue blazer with an embroidered badge
- Plain white shirt without patterned additions
- Charcoal Grey trousers; no jeans or cords
- The trousers should be neither too wide or too narrow (about ¾ shoe length should be used as a general guide)
- Medium grey 'V' neck pullover with blue trim - compulsory through autumn and winter terms
- Cardigans are prohibited
- Clip-on School tie – colours as per suppliers
- Plain dark coloured socks
- Plain black formal shoes with a sensible heel. They must be appropriate school shoes and not resemble a training shoe. Trainers, plimsolls, boots and flip-flops are not permitted
- Plain black or navy coat – No stripes or motifs
If coat has a fur trim, fur must be the same colour as the coat
- Plain black or navy scarves. Plain black or navy woollen hat (No motifs)
- Protective clothing: Apron
- **Summer Uniform:** Hats are not to be worn in the summer term

Sports and PE Wear

- Royal Blue Cardinal Wiseman Short Sleeve Training Top
- Navy Cardinal Wiseman Shorts
- White Socks

Optional sportswear

- ¼ Zip Navy Cardinal Wiseman Long Sleeve Training Top
- Navy Cardinal Wiseman Rain Jacket
- Navy Tracksuit Trousers (Must be plain with only name of brand allowed no other markings)
- Blue/Navy/White Baselayer Long Sleeve (Can be any manufacturer)

Plain Black or Navy Coat that covers the blazer (no stripes, motifs or patches of colour. Fur Trim must be the same colour as the coat). Denim, leather, suede, fur, PVC, tracksuit, body-warmers & tracksuit hooded tops are not permitted.

Plain Black or Navy scarves. Plain black or Navy woollen hats (no motifs or caps). Hats and scarves are not permitted in the summer term.

Plain White Shirt, without patterns or motifs

Plain White Shirt, without patterns or motifs

Clip-on School Tie

Clip-on School Tie

Medium grey 'V' neck jumper with blue trim (compulsory)

Royal blue blazer with an embroidered badge

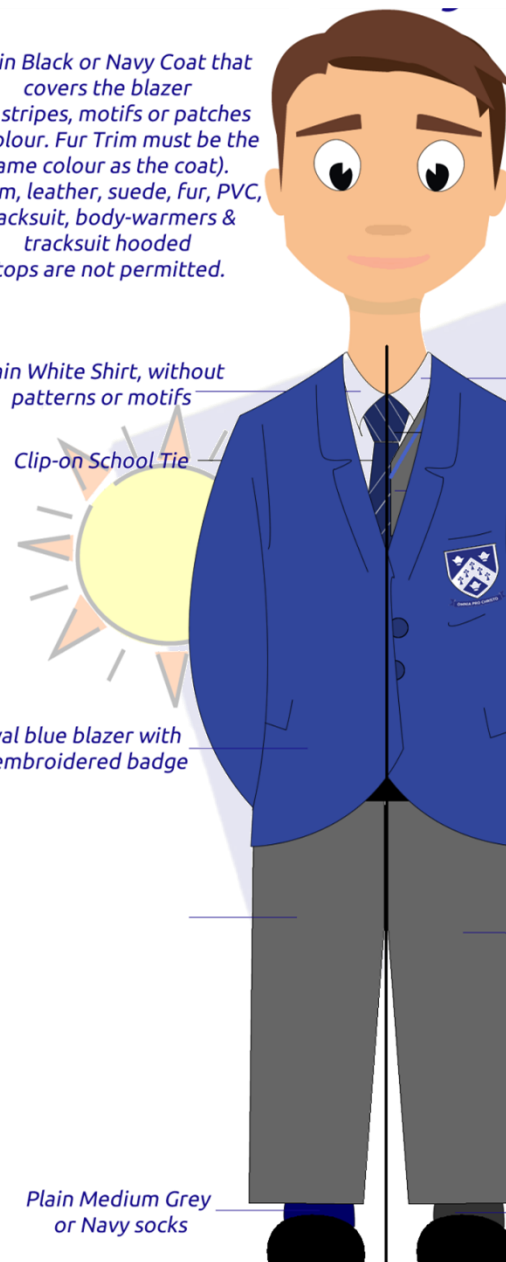
Royal blue blazer with an embroidered badge

Charcoal Grey trousers to be worn with a black belt; no jeans or cords.

Plain Medium Grey or Navy socks

Plain Medium Grey or Navy socks

Plain black shoes with sensible heel (with black laces where applicable). Trainers, plimsolls, boots or flip-flops are not permitted.



Official School Uniform Suppliers: PMG Schoolwear
PMG Schoolwear: 13 Broadway Buildings, Boston Rd, Hanwell, W7 3TT
0208 567 1155 ealing@pmgretail.co.uk

Official School Uniform Suppliers: Juniper
154-156 Broadway, West Ealing, W13 0TL
020 8998 0144
juniperuniform.com info@juniperuniform.com



All pupils at The Cardinal Wiseman School from Year 7 to Year 11 are expected to wear school uniform. All items of uniform are compulsory and must be purchased through the official school uniform suppliers. **Please make sure that all your clothing is clearly marked with your name.**

Please be aware that if you do not wear the correct school uniform **you may be placed in isolation until the situation has been resolved.**

No jewellery may be worn, except for medical bracelets, watches and small plain stud earrings –no more than one per earlobe. **Make-up and nail varnish may not be worn.** No badges to be worn other than a small religious type. Nose studs are unacceptable.

Coats must be of a **length that covers the Blazer.** They must be completely plain black or navy and **without stripes or motifs.** If the coat has a **fur trim**, it must be the **same colour as the coat.** The material should be plain cotton/woollen or a similar looking synthetic material. **Denim, leather, suede, fur and leather look "PVC" are unacceptable materials.** In addition, tracksuits and tracksuit hooded tops are not acceptable for use as coats.

Girls' Uniform

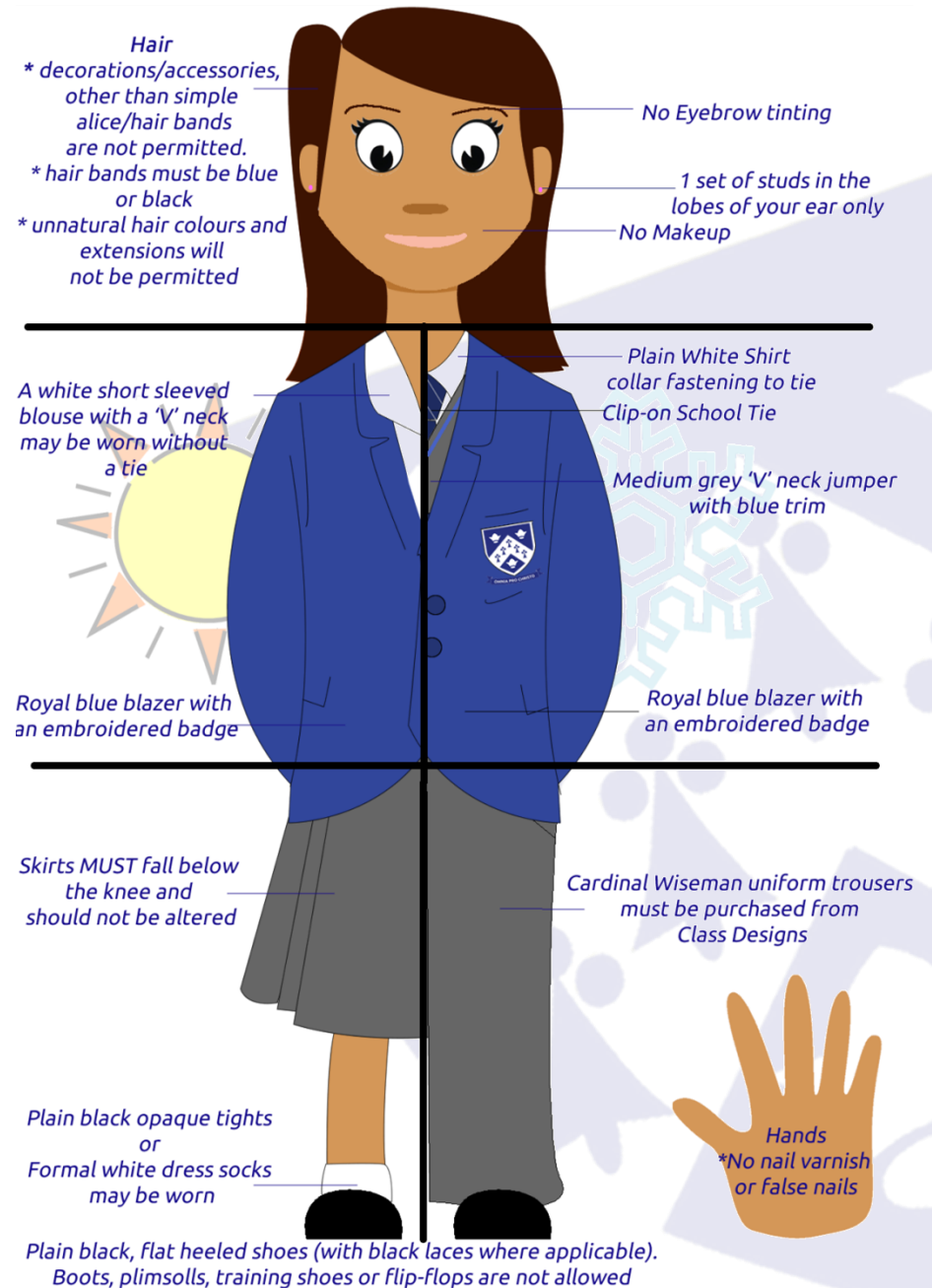
- Royal blue blazer with an embroidered badge
- Plain white shirt type blouse – collar fastening to tie
- Cardinal Wiseman uniform skirt, which must be Knee length and should not be altered. Available from listed suppliers
- Medium grey 'V' neck jumper with blue trim - now compulsory
- Clip-on School tie – colours as suppliers
- Black opaque or natural colour plain tights
- Formal white dress socks may be worn in warm weather
- Optional Item: Wiseman uniform trousers must be purchased from **PMG or Juniper Schoolwear.** Please quote code 3832/senior bootleg Banner girls trouser - Grey. Proof of purchase should be retained
- Plain black, formal flat heeled shoes. Boots, plimsolls, Training shoes or flip flops are not allowed.
- Plain black or navy scarves. Plain black or navy woollen hat (no motifs)
- Protective clothing: Apron
- **Summer Uniform:** A white, short sleeved blouse with a 'V' neck may be worn without a tie. Hats are not to be worn in the summer term

Sports and PE Wear

- Royal Blue Cardinal Wiseman Short Sleeve Training Top
- Navy Cardinal Wiseman Shorts
- White Socks

Optional sportswear

- ¼ Zip Navy Cardinal Wiseman Long Sleeve Training Top
- Navy Cardinal Wiseman Rain Jacket
- Navy Tracksuit Trousers (Must be plain with only name of brand allowed no other markings)
- Blue/Navy/White Baselayer Long Sleeve (Can be any manufacturer)



Official School Uniform Suppliers: PMG Schoolwear

PMG Schoolwear: 13 Broadway Buildings, Boston Rd,
Hanwell, W7 3TT
0208 567 1155 ealing@pmgretail.co.uk

Official School Uniform Suppliers: Juniper

154-156 Broadway, West Ealing, W13 0TL
020 8998 0144
juniperuniform.com info@juniperuniform.com