



The Cardinal Wiseman Catholic School



Sixth Form Prospectus

2021



www.wiseman.ealing.sch.uk



We believe

that the role of the Cardinal Wiseman Sixth Form is to ensure that our students develop and learn within a Catholic environment. We welcome applications from all backgrounds and faiths and believe that it is important to develop our students both as learners and citizens, allowing them to make informed choices about their future. It is our aim to ensure that we maximise the potential of all our students through inspirational teaching, support and guidance.

This school is committed to safeguarding and promoting the welfare of children and young people and expects all staff and volunteers to share this commitment.

You can achieve

great things through hard work and dedication. Wiseman students have constantly excelled and experienced great success; be it from attending Oxford or Cambridge to studying medicine at UCL or engineering at a Russell Group University. If you are ambitious and have a lust to achieve, then you too can be one of those people.



Welcome to the Cardinal Wiseman Sixth Form

My promise to you is that The Cardinal Wiseman Sixth Form will provide an outstanding platform for your future university and employment choices, through the highest quality teaching, guidance and support.

In July 2018 the Cardinal Wiseman Sixth Form was judged by Ofsted as outstanding, following a rigorous inspection from a team that included four serving secondary Headteacher's. A Level results validated Ofsted's judgement, with around one in three grades at A* or A and well over half of all exams taken being graded A* to B.

The Sixth Form Team, led by

Mr Hickman, aim to position each student so that they have a range of opportunities at the end of Year 13. These will range from attending elite Russell Group Universities to high quality apprenticeships. There is no achievement ceiling for our Sixth Form students; in each of the last eleven years' students have achieved Oxbridge places. Unlike most Sixth Forms we employ an experienced full time UCAS advisor, Mrs Sowa, to ensure that every student is given personalised guidance in relation to their pathways following A levels.

Our community is inclusive and welcoming. Students from other schools, faiths or non-faiths will

be warmly welcomed, as acknowledged in the recent Ofsted report.

Should you choose to join our Sixth Form I am confident that in the years ahead you will look back to one of the most rewarding and enjoyable experiences of your life – a time when you clarified your study and occupational choices, achieved well and established friendships that will last a lifetime.

Mr M Kiely,
Headteacher



A vibrant and distinct learning community

The Cardinal Wiseman 6th Form is an Outstanding sixth form. Students make excellent progress here, recording fantastic results.

Students achieve outstanding grades here with around a third of all grades being A* to A in recent years and two thirds A* to B. These clearly open up a vast array of future opportunities. Students here attain places at top universities across the country including Oxford and Cambridge as well as on courses to study medicine.

An increasing number of students have embraced opportunities on excellent apprenticeships and university

apprenticeships schemes such as with Morgan Stanley Investment Bank while doing Computer Software Engineering at Birkbeck University of London or with Vinci PLC (part of the joint venture behind building HS2) while studying for Civil and Infrastructure Engineering at University of Warwick.

I believe that all students should be supported in achieving their best, whether that is with fulfilling their academic potential or developing more holistically through taking opportunities in some of the many enrichment activities that are available to them. I am very proud of the way our students act as role


models to youngsters across the school and it is clear that students thrive here.

We have a unique community with specialist, experienced teachers and a dedicated 6th form team who provide the highest standard of pastoral care. I am in a privileged position to be able to work with and support our amazing young people at this important stage in their lives and I look forward to welcoming you into Year 12.

Mr A Hickman
Senior Assistant Headteacher
(Director of Sixth Form)




What does Ofsted say about the Cardinal Wiseman Sixth Form?



“The sixth-form provision is outstanding. Students are supported effectively to achieve their best.”

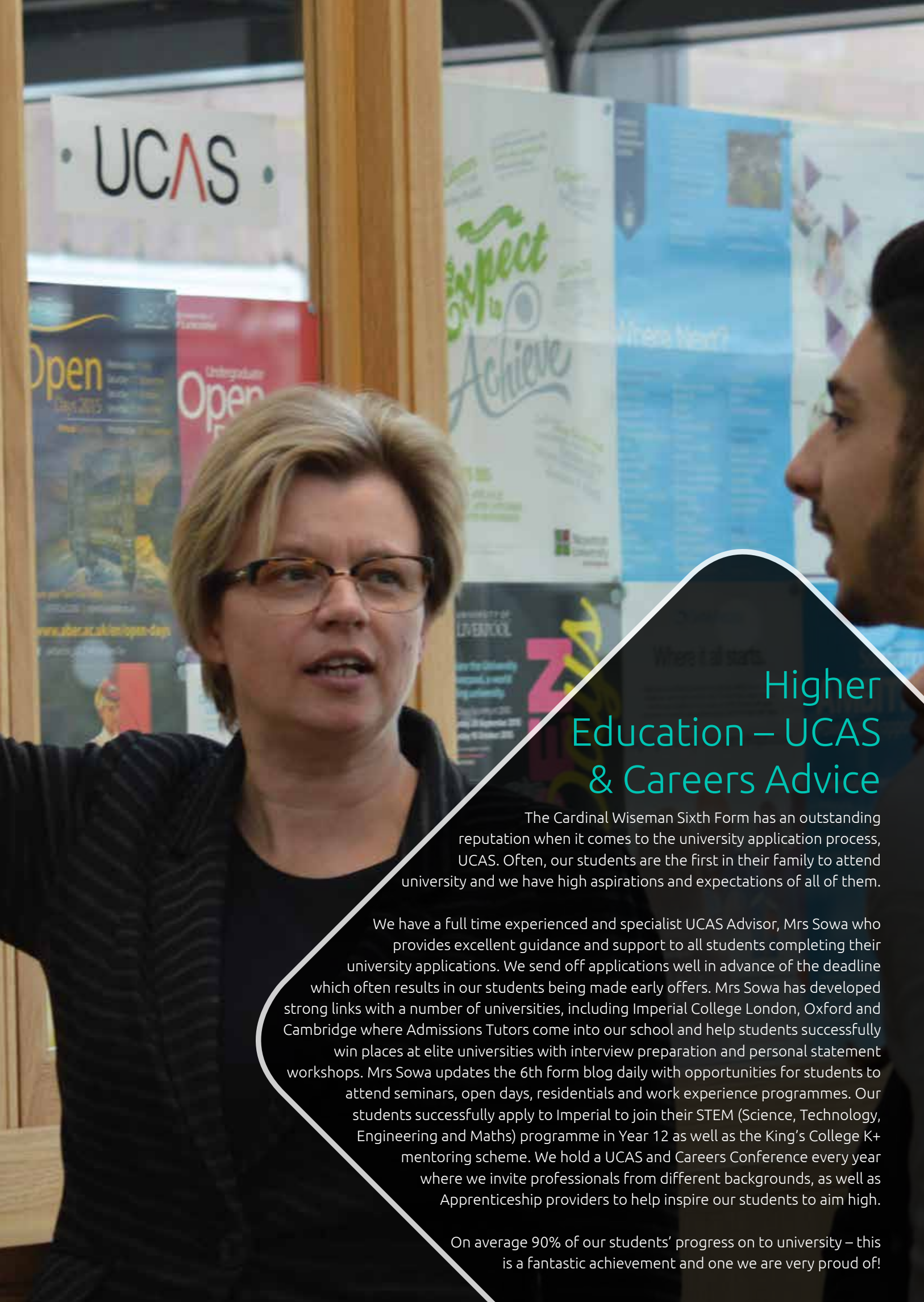
“The leadership of the sixth form is exceptionally strong and shows continuing improvement in the quality of learning and support for students.”

“The sixth form has a strong sense of community...Students feel very safe.”



“Students’ work in folders confirms that they make strong progress. The outstanding features of learning and teaching...have been imported seamlessly into the sixth-form programme.”

Ofsted July 2018



Higher Education – UCAS & Careers Advice

The Cardinal Wiseman Sixth Form has an outstanding reputation when it comes to the university application process, UCAS. Often, our students are the first in their family to attend university and we have high aspirations and expectations of all of them.

We have a full time experienced and specialist UCAS Advisor, Mrs Sowa who provides excellent guidance and support to all students completing their university applications. We send off applications well in advance of the deadline which often results in our students being made early offers. Mrs Sowa has developed strong links with a number of universities, including Imperial College London, Oxford and Cambridge where Admissions Tutors come into our school and help students successfully win places at elite universities with interview preparation and personal statement workshops. Mrs Sowa updates the 6th form blog daily with opportunities for students to attend seminars, open days, residentials and work experience programmes. Our students successfully apply to Imperial to join their STEM (Science, Technology, Engineering and Maths) programme in Year 12 as well as the King's College K+ mentoring scheme. We hold a UCAS and Careers Conference every year where we invite professionals from different backgrounds, as well as Apprenticeship providers to help inspire our students to aim high.

On average 90% of our students' progress on to university – this is a fantastic achievement and one we are very proud of!

Sixth Form life

"The Cardinal Wiseman Sixth Form team are in one word, phenomenal, as they have pushed and helped me to fulfil my potential. Achieving A*AB at A-Level is no easy feat and I could not have done it without them and so I thank them dearly for that. I had a truly wonderful sixth form experience filled with laughs, motivational assemblies and putting in hard work to get to where I needed to be in the end.

As I begin a new chapter in my life I will always be thankful and appreciative of the Sixth Form team and staff and would like to thank them once again for getting me into one of the best universities in the country (Loughborough) as well as helping me grow as a person."

Leon Dzapasi

"Joining a sixth form with the warm and welcoming staff have made the process given me the learner but forever proud sixth form."



here I knew no one was a daunting thing to do, but
ming community at Cardinal Wiseman could not
rocess easier. Attending this sixth form has
e opportunity to develop not only as a
t also grow as a person. For this I will
er be grateful and I will always be
to be able to say that I attended
h form at Cardinal Wiseman."

Morgan Hill



"I could
not have received
better support from
the Sixth Form Team,
who gave it their all in
helping me with the lengthy
Cambridge application process.

Continual motivation, both in
lessons and assemblies, from the
Sixth Form team and my subject
teachers helped me to achieve
my grades. It's truly amazing
how they managed to cater
to my individual needs
while juggling the
needs of hundreds
of other pupils."

Suneet Dias



Care and support

One of the key strengths of our Sixth Form is the pastoral support that the students receive as they are nurtured through what can be a very stressful period in their lives. The Sixth Form team views the link between pastoral care and curriculum support as vital to the success of our students. We work closely with subject teachers to ensure students are making progress and receive additional help to reach their target grades. Gifted and Talented students are identified early and have a specific programme focusing on Oxbridge entry. Experienced Heads of Year, tutors and Academic Support Assistants all help to ensure appropriate interventions are put in place so that all students achieve to the best of their ability.

We are fortunate enough to have a Connexions advisor working in school, who regularly meets with students to provide careers advice. Confidential counselling is available to our students should it be required, as well as a Chaplain who offers guidance and help to all students.

*"[Le...]
efforts to
business and in
pathways for stud
secured funding for
international in*



Enrichment opportunities


Whilst we regard academic success as paramount at the Cardinal Wiseman School, we also recognise that it is vital that we help to produce well rounded students. With this in mind, the school has a co-ordinated enrichment programme designed to help develop our students holistically and also prepare them for life in the wider world. It is also undeniable that universities seek out students who have more to offer than 'just' academic grades; they want students who actively seek to enrich their own lives.

The Sixth Form team holds the Catholic ethos at its core and stresses the importance of the Gospel values to all of our students. Sixth Form students study a Religious Moral Development course and are given opportunities to work with local charities as well as accompany disabled children in a pilgrimage to Lourdes.

We offer the Extended Project Qualification (EPQ) to all students who are interested in working independently on a research topic of their choice. We also have leaders in Art, Community and Sports as well as a strong prefect team who are fully engaged in all aspects of school life. We have strong links with a local special school and many of our students participate in a weekly volunteering programme working with young children with a diverse range of physical and learning disabilities.

Many students also partake in the Gold Duke of Edinburgh award or become 'buddies' to Y7 and Y8 students. Y12 and Y13 are particularly successful in debating and regularly run clubs for lower school students thereby developing their communication and leadership skills.

*leaders] are tireless in their
to forge new relationships with
industry and develop new progression
ents. This year, leaders have successfully
five degree-level apprenticeships from an
investment bank."* **Ofsted July 2018**

A photograph of two students in a library. In the foreground, a Black female student with long braids and glasses is looking to the left. Behind her, a white female student with long blonde hair is smiling and looking in the same direction. They are both wearing school uniforms. The background is filled with bookshelves.

"Students who join the school at the start of Year 12 are effusive about the welcome they receive from students and the induction and support they get from staff. Parents also support this view."

**Ofsted
July 2018**

Learning facilities

The Sixth Form is split across two new centres, one of which is brand new this autumn. Both buildings provide excellent learning facilities with the study areas being based on a 'university library' where students can complete work during their study periods.

There is access to computers, printers, laptops and iPads as well as WiFi throughout these areas. There are separate social facilities and collaborative learning spaces where students can work together in small groups.

The school has an extensive library. It is equipped with journals, newspapers and academic books for the students to use to help them progress with their studies.

Great expectations

You can expect:

- High quality classroom teaching, using a variety of teaching methods and strategies.
- Support for independent learning outside the classroom.
- Guidance and support from your tutor, Head of Year and the rest of the teaching staff.
- Regular feedback on your progress and discussions about your targets and how to reach them.
- A wide selection of extra-curricular activities and travel opportunities.

In return, we expect:

- You will give your best effort in all areas of study.
- Excellent attendance and punctuality so that you can succeed in the Sixth Form.
- You to get involved in the wider life of the school.
- You to show respect to all students and staff.
- You will act as a role model and ambassador for the younger students.

How to apply

Simply complete the online application form and ensure it is sent to the school by **Friday 18th December 2020**.

Please contact the school to complete a paper copy should you be unable to apply online.

External applicants will need to provide a reference and send this to the Sixth Form Administrator at the school.

Formal offers are made in the Spring term and are conditional offers based on GCSE performance.





The Cardinal Wiseman Catholic School

Greenford Road, Greenford, Middlesex UB6 9AW

T 020 8575 8222

F 020 8833 2090

W www.wiseman.ealing.sch.uk

E info@wiseman.ealing.sch.uk