

Katie Miller
Schools and Colleges Liaison Officer



ROYAL
HOLLOWAY
UNIVERSITY
OF LONDON

Why University?



WINDSOR CASTLE 13 miles



VIRGINIA WATER 2 miles



Biological Sciences
Business & Management
Classics
Computer Science
Drama, Theatre & Dance
Earth Sciences
Economics

Electronic Engineering
English
Geography
History
Languages, Literature & Cultures
Law, Criminology & Sociology
Mathematics

Media Arts
Music
Philosophy
Physics
Politics & International Relations
Psychology
Social Sciences





Today's Session

Intro to
Universities

Choosing a
course and
uni

Why go to
uni?

Students' future options



University

Employment

Degree apprenticeships are an amazing option for students who want to work and study for a degree at the same time

Options

Apprenticeship

Gap Year



Intro to universities and degrees

UK universities in numbers



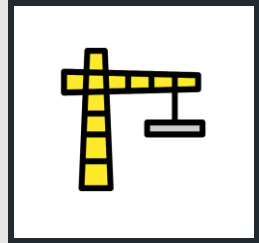
ROYAL
HOLLOWAY
UNIVERSITY
OF LONDON

166 universities in
the UK

Around **65,000**
undergraduate
courses

757,000
applications to UK
universities in 2023

Types of Degree



**Foundation
Degree**

A note on MSci degrees:

An MSci is a four-year integrated undergraduate/postgraduate Masters degree
It differs from an MSc -

MSc:

- is applied for after / just before graduating from a BSc
 - Can go to another institution to study it
 - Can be more specialised

MSci:

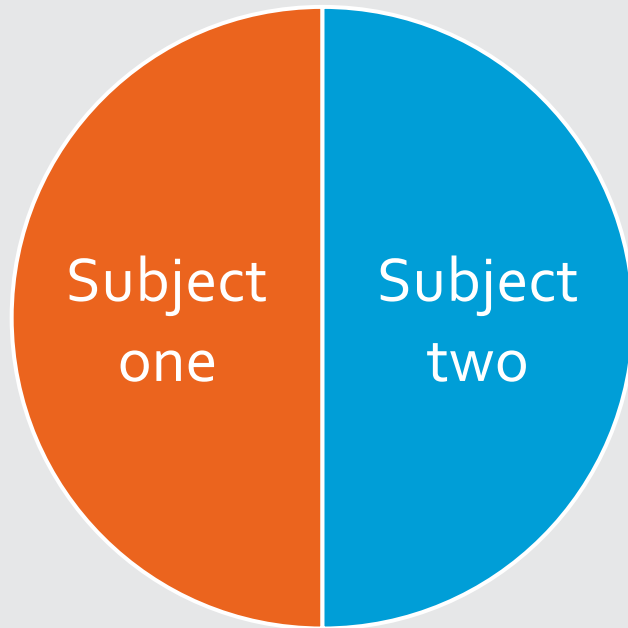
- Apply at the same time as you would for a BSc
- All four years cost same as an undergraduate course
- Final year follows the same academic year as a UG course

**Postgraduate
Degree**

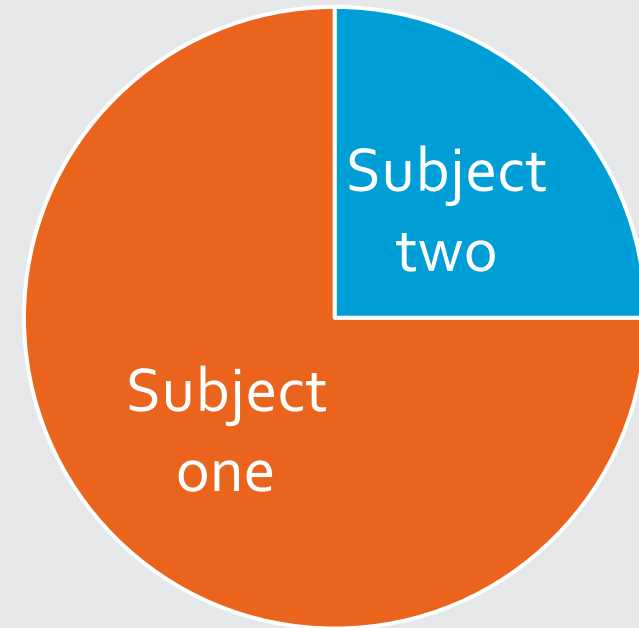
**MA
MSc**

**LLM
MEng
MMus**

Want to study more than one subject?



'and'



'with'

Course Options: Year Abroad



ROYAL
HOLLOWAY
UNIVERSITY
OF LONDON

Study or work
abroad

Will make your
course 4 years

Funding help
may be available
e.g. Turing Grant

Mandatory for
language
courses



Course Options: Year in Industry



ROYAL
HOLLOWAY
UNIVERSITY
OF LONDON

Will make your
course 4 years

Careers Service
support to find a
placement

Placements can
be paid – depends
on employer

Can apply at time
of UCAS
application



Flexible options

Contextual Offers

Deferring

Part time or online
study



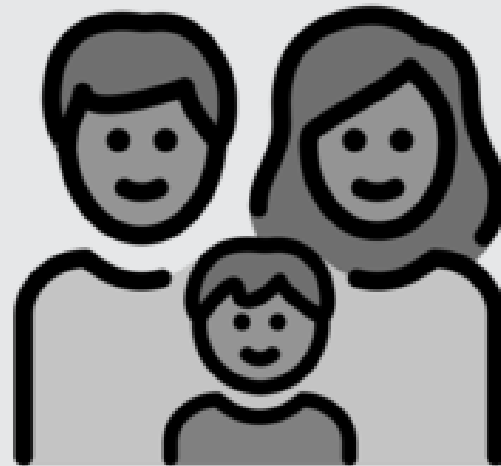


Choosing a Uni and Course

Home or away?



Living at home



Moving out but
staying closer to
home



Moving further
afield

University Types



City

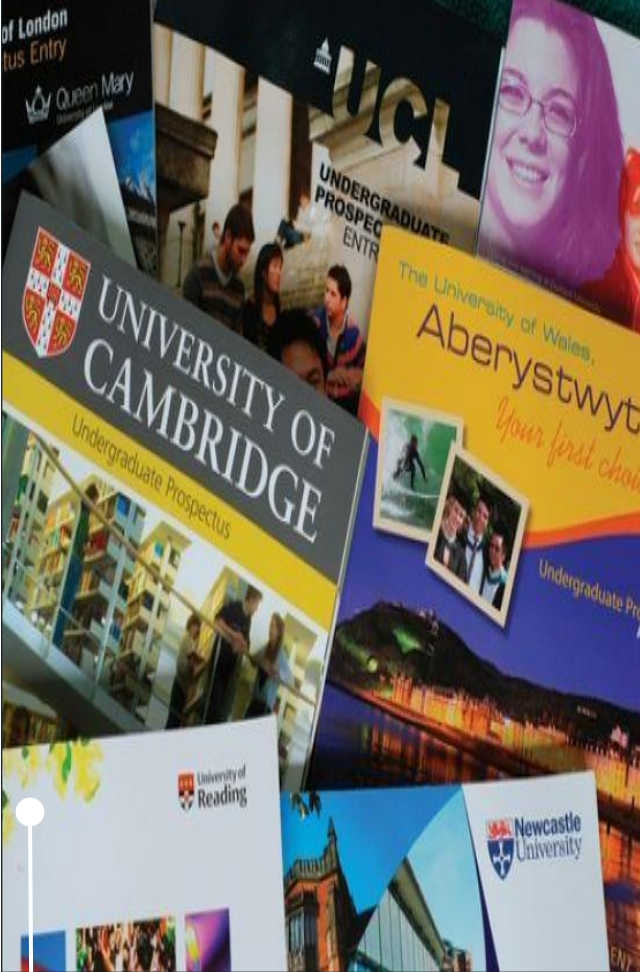


Campus



Collegiate

Researching Universities



Prospectuses



Student reviews



Open days and taster talks



Online resources

Search university events

Search the directory of university events for school groups and individual students

Start by entering your school name or postcode

Search



Resources for school and college colleagues

Request a bespoke event

Send event requirements

Watch events on demand

University guidance videos for

Access school and college resources

University guide brochures,

Things to look out for at Open Days:



Accommodation



Study spaces



Sports facilities



Social areas



Food and drink



Support services

...and don't forget to check out the local area too!

What are the transport options?

What is the nightlife like?

What supermarkets are there?

How safe is it?

Do you like it?

How much is the cost of living?



Parents and Supporters role – Researching



Ask the difficult questions

- If there is something your child is unsure to ask, be the one to step forward.

Discuss beforehand

- Make sure you're aware of what your child is looking for so you can keep an eye/ear out.

Travel companion

- Visiting different locations can be a lot of fun and there is a lot of information to take in/discuss.

Pros and Cons

- Support by highlighting both the good and the bad, especially when making final choices.

Keep an open mind

- Before researching/visiting universities, limit expectations and pre-conceived ideas. Be ready for your child's views to differ to your own!



A note when researching:

Be aware of differences between similar courses at different Universities!



ROYAL
HOLLOWAY
UNIVERSITY
OF LONDON

Modules

Can differ between Universities

- E.g. First year BA History at Royal Holloway = ONE compulsory module, everything else optional
- First year BA History at King's College London = ALL compulsory, no optional

Accreditations

External accreditations from professional bodies

- E.g. LLB Law degree is a qualifying law degree accredited by legal regulatory bodies, required to become a lawyer
- BA Law is generally not
- Check what is required for future careers

Course Costs

Some universities cover more than others

- Course materials – e.g. arts degrees, will your university pay for materials?
- Field trips



Why go to
university?



Academic
Reasons



Personal
Reasons



Professional
Reasons



To develop
transferable
skills

Lifetime Earnings



ROYAL
HOLLOWAY
UNIVERSITY
OF LONDON



Lifetime increase in gross earnings of **£190k on average** as a result of attending HE.

(Department of Education, Feb 2020)

Employment rates



ROYAL
HOLLOWAY
UNIVERSITY
OF LONDON

66% of working-age graduates are in **high-skilled employment**, compared to 24% of non-graduates.

Figures from UK Gov Official Statistics 2022



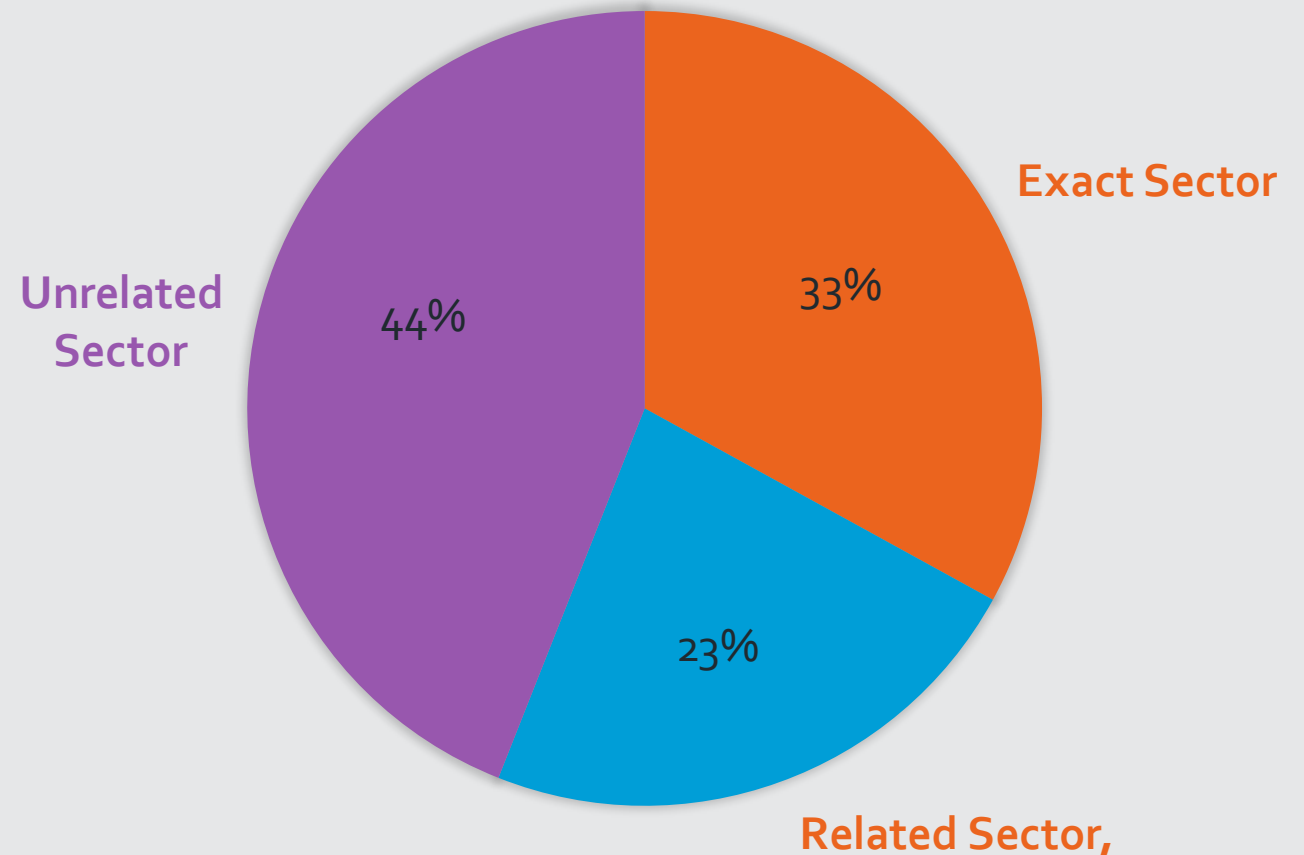
Career Options



PERCENTAGE OF GRADUATES WORKING IN THE FIELD OF THEIR DEGREE SUBJECT

A degree opens doors – no matter the subject.

Employers are looking to hire students with **transferable skills** that their degree has given them



Top tips for Parents / Supporters during Y12



ROYAL
HOLLOWAY
UNIVERSITY
OF LONDON

Start thinking early and encourage those conversations

Help with the planning and logistics for Open Days and research

Year 12

Encourage your child to take part in new experiences

Remind them to enjoy this time – it goes by quickly!

Thank you!



ROYAL
HOLLOWAY
UNIVERSITY
OF LONDON

What is a contextual offer?

UCAS Deadline?

Commuting vs halls?

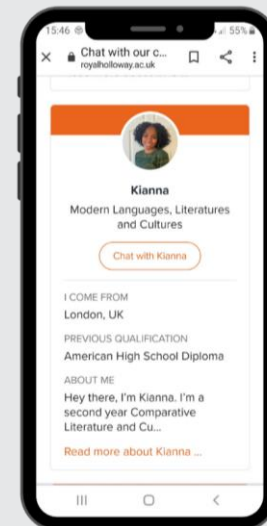
Joint honours?

Societies/ Clubs?

Student Finance?

Study Abroad or Placement?

Sign up to our parents
and supporters mailing
list to find out more
and get sent
information about our
open days



Chat to our
students and
staff