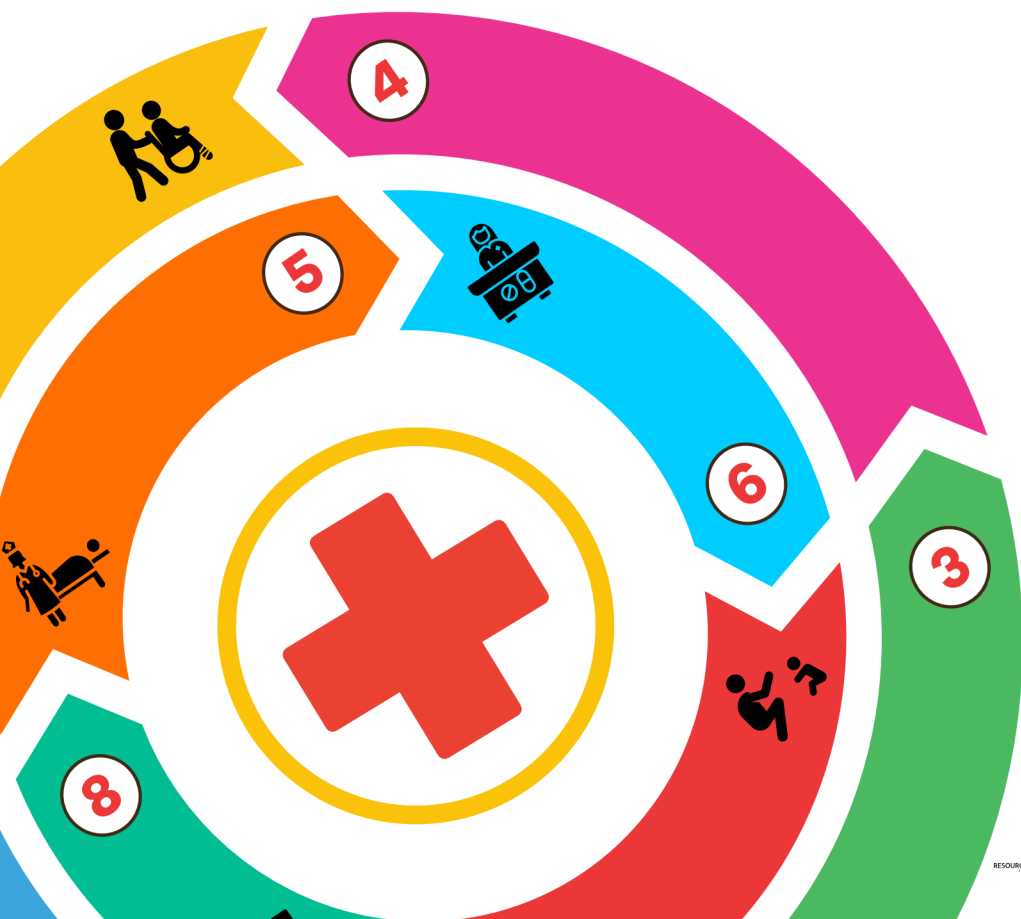


STEP INTO...

# HEALTH & SOCIAL CARE



# How to use this resource?

This guide is here to help you explore different job opportunities, understand how your skills can be applied in Health and Social Care, and discover the pathways that can lead you to a fulfilling career.



**Basic LMI:** Learn about Health and Social Care jobs, how many people are employed and the companies you could work for. This will give you a broad understanding of the job market.



**Explore Jobs:** Discover descriptions of different jobs to find ones that interest you.



**Apply Your Skills:** See how the Skills Builder Universal Framework can be used in jobs to develop skills like teamwork and problem-solving. Your tutor or adviser will help you to review your skills and rate your current ability. There is also an opportunity to provide your own examples.



**Discover Pathways:** Find out about education, training programs, and other resources to guide you on your career journey.



**Are you a friendly person who likes to help others?**



**Do you care about other people's feelings and wellness?**



**Do you want to work with people?**

**If the answer is YES then a job in Health & Social Care could be for you.**

# DID YOU KNOW...

There are many job roles in Health and Social Care and a career in this sector means you will play a vital role in looking after peoples health and well-being.

# 140,000

people across West London work in health and social care roles.

# 113,000

employees needed by 2030.



**Could you be one of them?**

# WHERE CAN YOU FIND LOCAL VACANCIES?



Hospitals



Care Homes



Nurseries



Community Centres



Healthcare Centres



Schools

## LOCAL INCLUSIVE EMPLOYERS INCLUDE...



West London  
NHS Trust



Churchill  
Health Care



Gold Care Homes  
*It's what's inside that counts*

care UK 



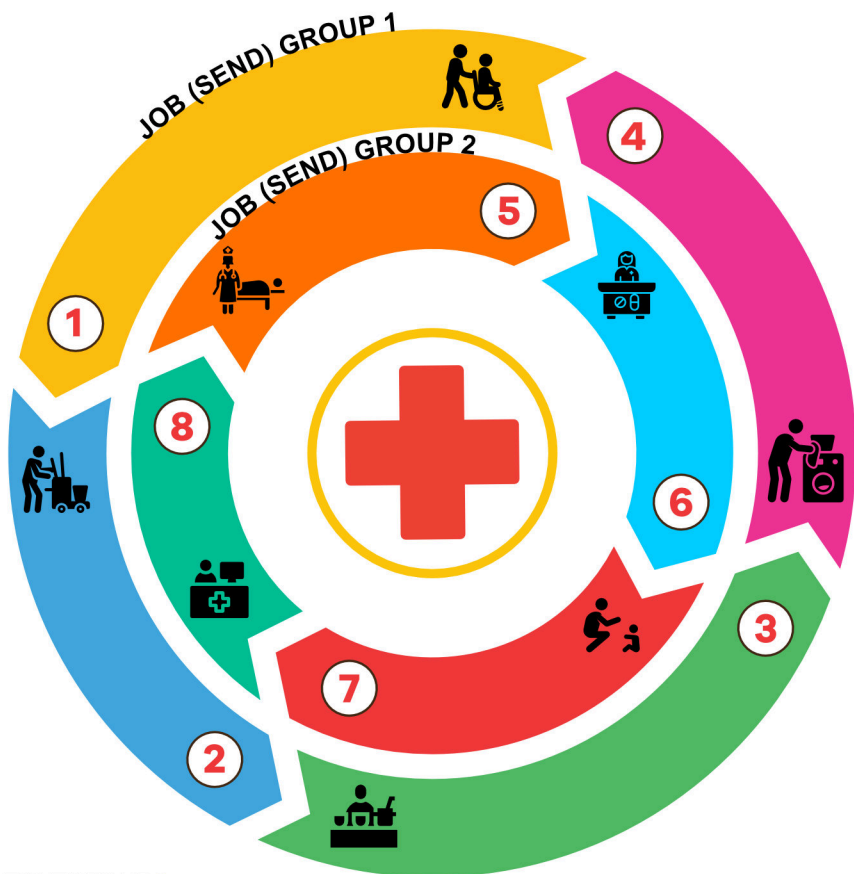
Achieve  
together

voyage care 

# HEALTH & SOCIAL CARE

# WHAT JOBS CAN YOU DO?

From hospital shops to meal delivery and art activities with elderly residents, discover hands-on roles where you can make a difference!



**TALENTINO!**

The CEC has adopted Talentino's #SameAndDifferent model, a national SEND school career framework designed to deliver effective career activities for young people with SEND. Developed from Talentino's work in schools, this concept enhances early career development and encourages employers to support the progression of individuals with SEND.



# JOB GROUP 1

don't require Level 2 Qualifications / GCSEs but can lead to supported employment, Supported Internships, Inclusive Apprenticeships, supported Enterprise, T-Levels, Traineeships and FE College.



## Hospital Porter

They help to move patients, equipment and medical supplies around a hospital.

Annual Salary

£22,000 - £24,000



## Domestic Worker

They carry out general cleaning of hospitals, care homes and offices.

Annual Salary

£17,000 - £24,000



## Kitchen Assistant

They cook food in hospitals and other services making sure patients and staff have nutritious, high quality food.

Annual Salary

£11,500 - £16,500



## Laundry Assistant

They wash, dry and fold linens and residents, clothing, as well as keeping the laundry area organised.

Annual Salary

£16,500 - £22,000

# JOB GROUP 2

do require at least Level 2 qualifications / GCSEs and can lead onto a Apprenticeships, University, College, Employment or Enterprise.



## Healthcare Assistant

They assist nurses, providing basic patient care in hospitals or clinics.

Annual Salary

£22,000 - £28,000



## Pharmacy Assistant

They prepare medications, manage inventory, and assist customers.

Annual Salary

£22,000 - £28,000



## Play Worker

They support children's activities and basic needs in educational or daycare settings.

Annual Salary

£14,500 - £22,000



## Medical Secretary

They manage administrative tasks and patient records in healthcare settings.

Annual Salary

£17,500 - £24,000

# HOW DO ESSENTIAL SKILLS HELP?



Accurately understanding patients' and clients' needs and concerns.



Clearly and compassionately communicating with patients, clients, and colleagues.



Effectively addressing and resolving challenges in patient care and support.



Innovating care approaches and solutions to improve patient outcomes.



Maintaining a positive and resilient attitude in stressful and challenging situations.



Setting and striving to achieve high standards of care.



Leading teams and initiatives to enhance patient and client care.







Collaborating effectively with colleagues to provide comprehensive care.



Rate your ability in each skill on a scale of 1 😞 to 5 😊.

Can you provide any examples of when you have used each skill?

**Skill**                      **Rating (1-5)**                      **Examples of when you have used this skill.**

		<hr/> <hr/>
--	---	-------------


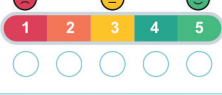
		<hr/> <hr/>
--	---	-------------

		<hr/> <hr/>
--	---	-------------

		<hr/> <hr/>
--	---	-------------

		<hr/> <hr/>
---	--	-------------

		<hr/> <hr/>
--	---	-------------

		<hr/> <hr/>
--	---	-------------

		<hr/> <hr/>
--	---	-------------

# ROUTES & PATHWAYS

Discover local options by clicking or scanning the QR codes on the following pages.

For more details about the pathways available



SCAN ME



SUCCESS

1

## EMPLOYMENT

Supported Employment, Inclusive Employment, Self Employment / Freelance



2

## VOLUNTEERING

Supported Volunteering / Work Placement (short or long term / during school after school)



3

## APPRENTICESHIPS

Inclusive Apprenticeships (1-2 yrs), Apprenticeships (1-5yrs)



4

## FURTHER EDUCATION

A Levels (2yrs), T Levels (2yrs), FE College (1-5yrs), Specialist College (SEND - 1-6yrs),



5

## SUPPORTED INTERNSHIPS

Supported Internships (6months - 1yr)



# 1. EMPLOYMENT



Earn money



Learn and grow



Contribute to society

# 2. VOLUNTEERING



Helping the community



Learning new skills



Feeling happy

# 3. APPRENTICESHIPS



On the job training



Earn while you learn



Excellent job outcomes

# 4) FURTHER EDUCATION



Learn what you love



Gain practical skills



Different levels for everyone

# 5) SUPPORTED INTERNSHIPS



Learn on the job



Get extra help



Prepare for future jobs

# 1. EMPLOYMENT



Base UK



West London Alliance



Mencap



Haringey London



Shaw Trust



WLA Work Finder



West London NHS



Hammersmith & Fulham



# 2. VOLUNTEERING



Hands on London



West Youth Zone



NHS West London



Hammersmith & Fulham



Action West London



The Felix Project



Action for Children



Barnardo's



# 3. APPRENTICESHIPS



Brent Works



West London College



West London NHS



West London IoT



HRUC



College of North West London



City of Westminster College



Dynamic Training



# 4) FURTHER EDUCATION



Richmond upon Thames College



College of North West London



Uxbridge College



City of Westminster College



Harrow College



Stanmore College



Barnett & Southgate College



West Thames College



West London Colleges



# 5) SUPPORTED INTERNSHIPS



Shaw Trust



Mencap Training Academy



Project Search



West London Alliance



Transport for London



DFN Project SEARCH



Whittington Hospital



Work Start



Hammersmith & Fulham



## BUILD YOUR VOCATIONAL PROFILE

Helping you to explore future pathways

Education choices and future planning tools for young people with SEND

Scan to START building your Vocational Profile

